

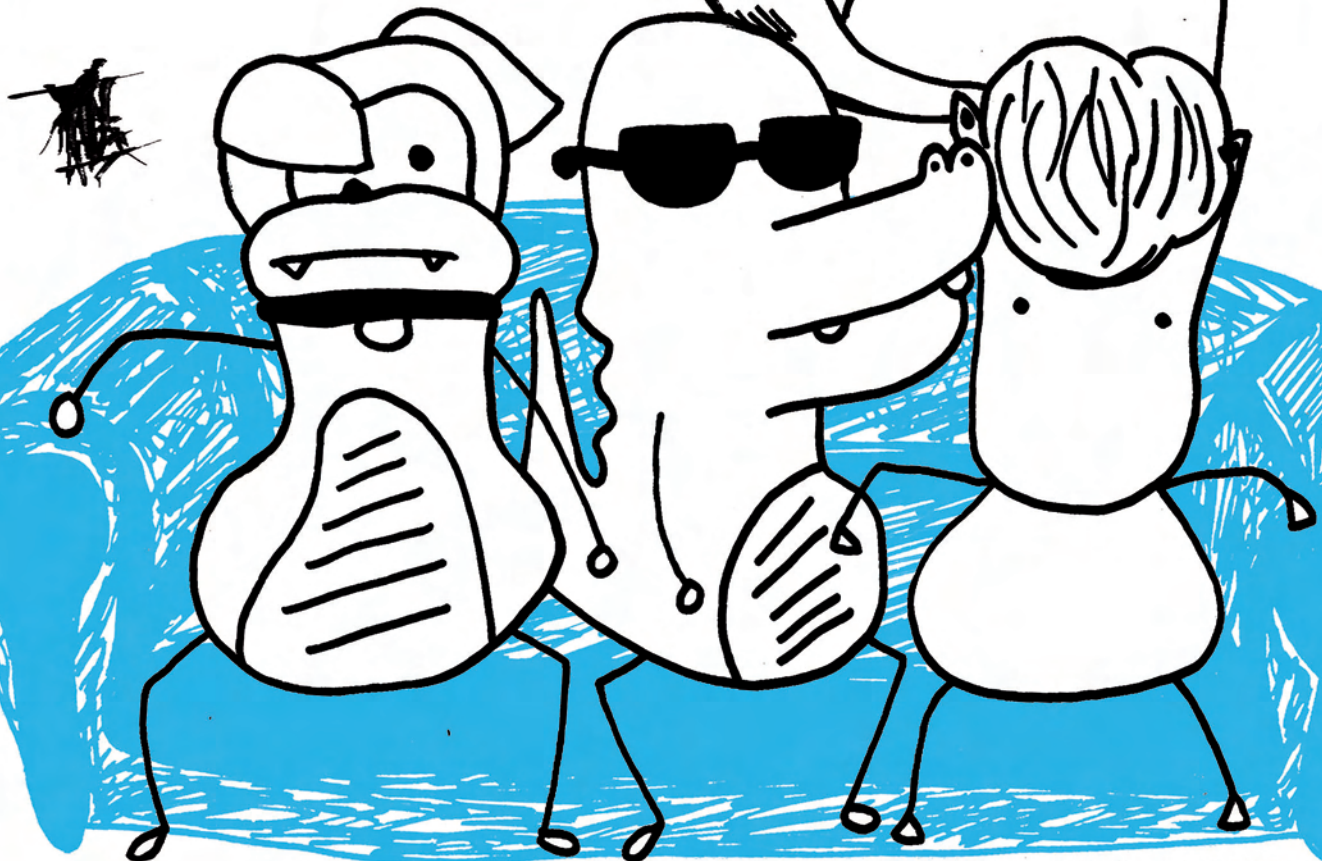
LIKE CAT AND DOG



TEATRE
ANIMAL

Co-produced by:

OBSIDIANA



K10M6



Even invented friends might get you in trouble.

This is the story of Nacho, an insatiable artist
His drawings are his passion,
As well as his friends.

Nacho has found a way to bring them to life and communicate with them, but beware! Anything can happen when they are together, everything is possible in this world of fiction... or is it really?

What happens when you get angry? Who's right and who's wrong? Is it the dog or the cat? The crocodile or the bird? ¿Nacho or Lola?

Like CAT and DOG will not answer these questions, but will fill them with smiles and emotions.

- **Like CAT and DOG** is a multidisciplinary show, a fusion of visual arts, performing, multimedia and music.
- **Like CAT and DOG** speaks of relationships and the feelings they provoke in us
- **Like cat and DOG** interacts with the audience and with the space
- **Like cat AND DOG** is suitable for human animals of all ages and cultures. Unsuitable for insensitive beasts.



Video illustration

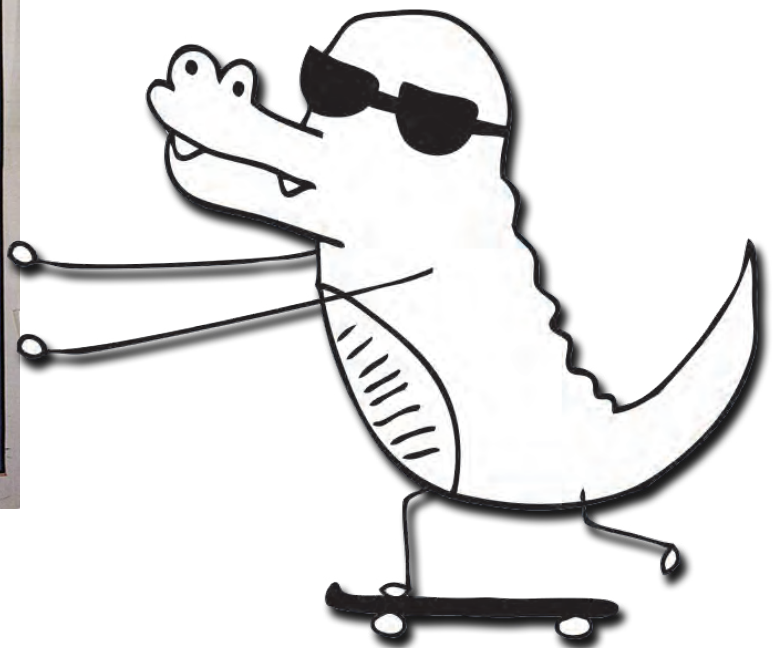
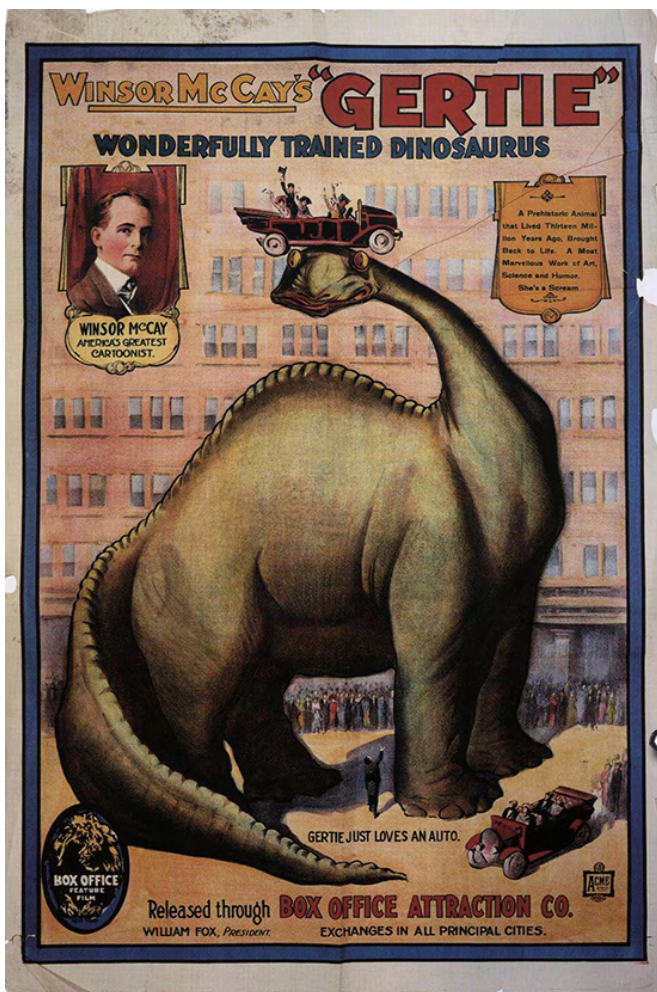
The screen is the world in which Nacho's friends live. He draws them and can get so close to them it seems he could jump into the screen.

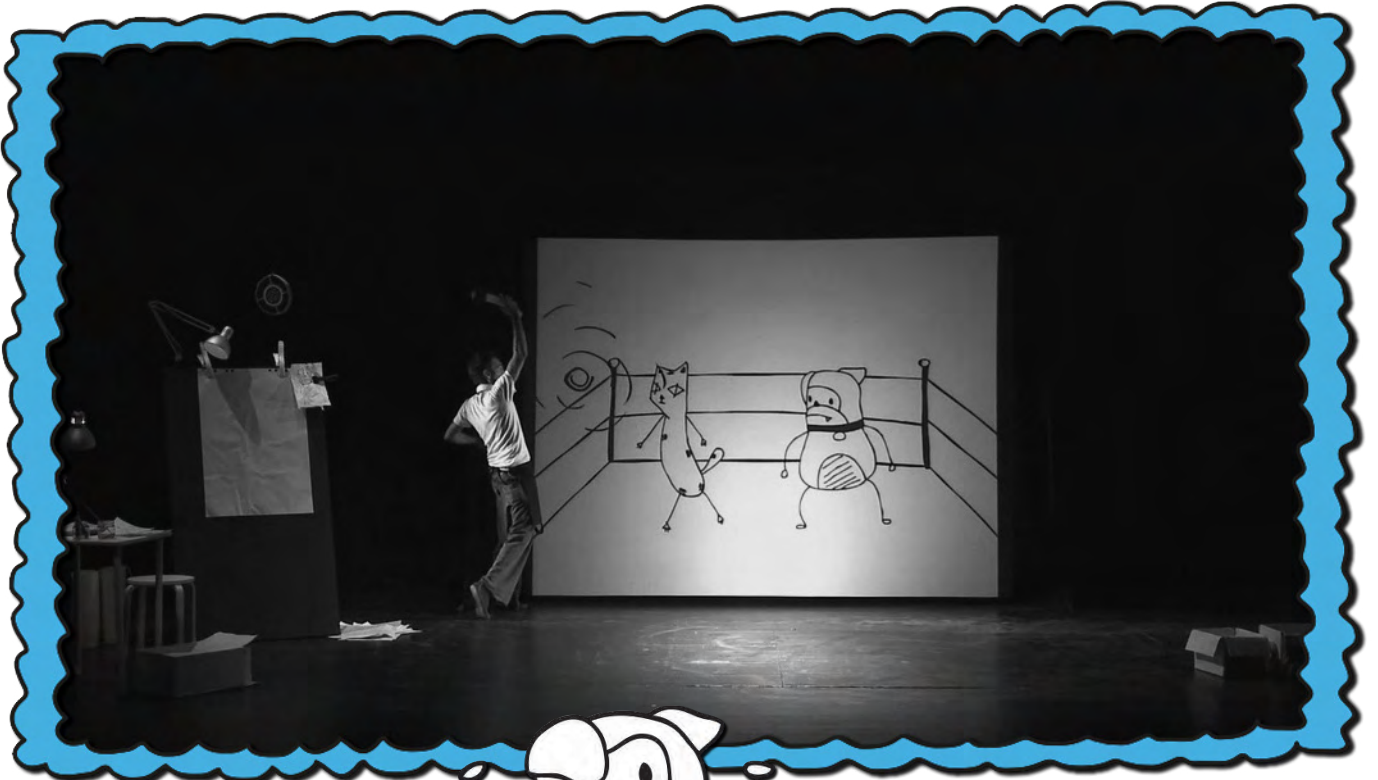
Music and sounds

An original score which is synchronized to the images and where each character has his very own sound. The music and sounds are vital to each character, and aid us in expressing emotions where the simplicity of the drawings prevents us from doing so.

History

The single stroke and imperfect animation are without a doubt a tribute to one of the pioneers of animation, Winsor McCay. We seek the origin of cartoons and moving image. How does the public react when an illustrated train enters the screen?





LLUÍS PETIT / is [NACHO](#)

An actor and clown with endless desire to break theatrical conventions. He relies on the direct contact with his audience, humour and the combination of artistic disciplines, and these are all featured in his various creations: "Invisible", "Kamchàtka", "Habitaculum" or "Like cat and dog" are just several examples

JUDIT ORTIZ / is [LOLA](#)

A clown and actress moulded in street theatre with "Kamchàtka" "Wandering Orchestra" and "Fadunito" companies. Her line of research center on theatrical improvisation, audience interaction and humour. Her shows are marked by a casual style and freshness of the characters. Lola, her character in "Like cat and dog" proves it.

KILOMBA / is the author of [ARTWORK](#)

Her artistic style ranges from Street Art to erotica or child illustration. Her work features spot colours and bold lines, as well as a diversity of materials used to create the work.

Buenos Aires, her hometown, Barcelona, Miami, Berlin, Munich, Chile are some of the places where her work was exhibited.

www.kilomba.com

JESÚS PEDRO PACHECO / performed the [ANIMATION](#)

Pedro was born in Malaga and thanks to office supplies and drawing of his family, began their relationship in the art world. His studies of Fine Arts in Madrid and Switzerland, along with an 'interaction and multimedia' graduate degree in Barcelona allow him to work as a freelancer for different companies, brands, associations and cultural centers.

www.unosetenta.com

CLARA XUCLÀ / edited, as well as a co-written

"Planeta imaginario" (TVE) and "Programa curt" (TV3) prepared her for directing "Leonart" (TVE). Specifically, the "Donna Lisa" section, which presents clips with bold juxtapositions, along with different crafts which were carry out daily. All these helped forge a style which was confirmed with "GolobicaTV" (TV3) and her production company Zink'in Films where she unleashes her fast and very musical audiovisual design.

www.vimeo/claraxucla

XARIM ARESTÉ / created the [ORIGINAL MUSIC](#)

Gil Gerard (Tarragona, 1976), started out as a musician in Zul, Pupille, Don H House or Simon and Telefunken groups. He has composed the soundtracks for several films like themselves and Damned and The Double Steps Isaki Lacuesta and documentary Qatar, Sotorra Alba's career short.

He combines his role as musician with tahat director, camera, screenwriter and producer.

www.myspace.com/verypomelo

GERARD GIL / *created the SOUND EFFECTS*

Gil Gerard (Tarragona, 1976), started out as a musician in Zul, Pupille, Don H House or Simon and Telefunken groups. He has composed the soundtracks for several films like themselves and Damned and The Double Steps Isaki Lacuesta and documentary Qatar, Sotorra Alba's career short.

He combines his role as musician with that of director, camera, screenwriter and producer.

www.gerardgil.com

IOLANDA LLANSÓ I CURET / *has done STAGING REVIEW*

Author, director and actress, awarded twice with the 'Best Director' award from FETEN -European Theatre Festival, in Gijón, Spain. She won BEST DIRECTOR AWARD in 2002 (with Contes del Cel) and 2005 (with PAPIRUS)

Part of Xirriquiteula Theatre since 1989 where she developed most of her work as artistic director. Above all she is an artist who not only directs her productions but also handles the plastic conception, set and costume designs thereof.

CAST and crew:

Original idea: Leo Petit and Lluís Ferrer

Cast: Lluís Petit (Nacho) and Judit Ortiz (Lola)

Written by: Lluís Petit, Judit Ortiz and Clara Xuclà

Directed by: Judit Ortiz

Editing: Clara Xuclà

Illustration: Kilomba

Animation: Jesus Pedro Pacheco

Music: Xarim Aresté

Sound effects: Gil Gerard

Lighting Design: Ludovic Kovacs and Daniel Carreras

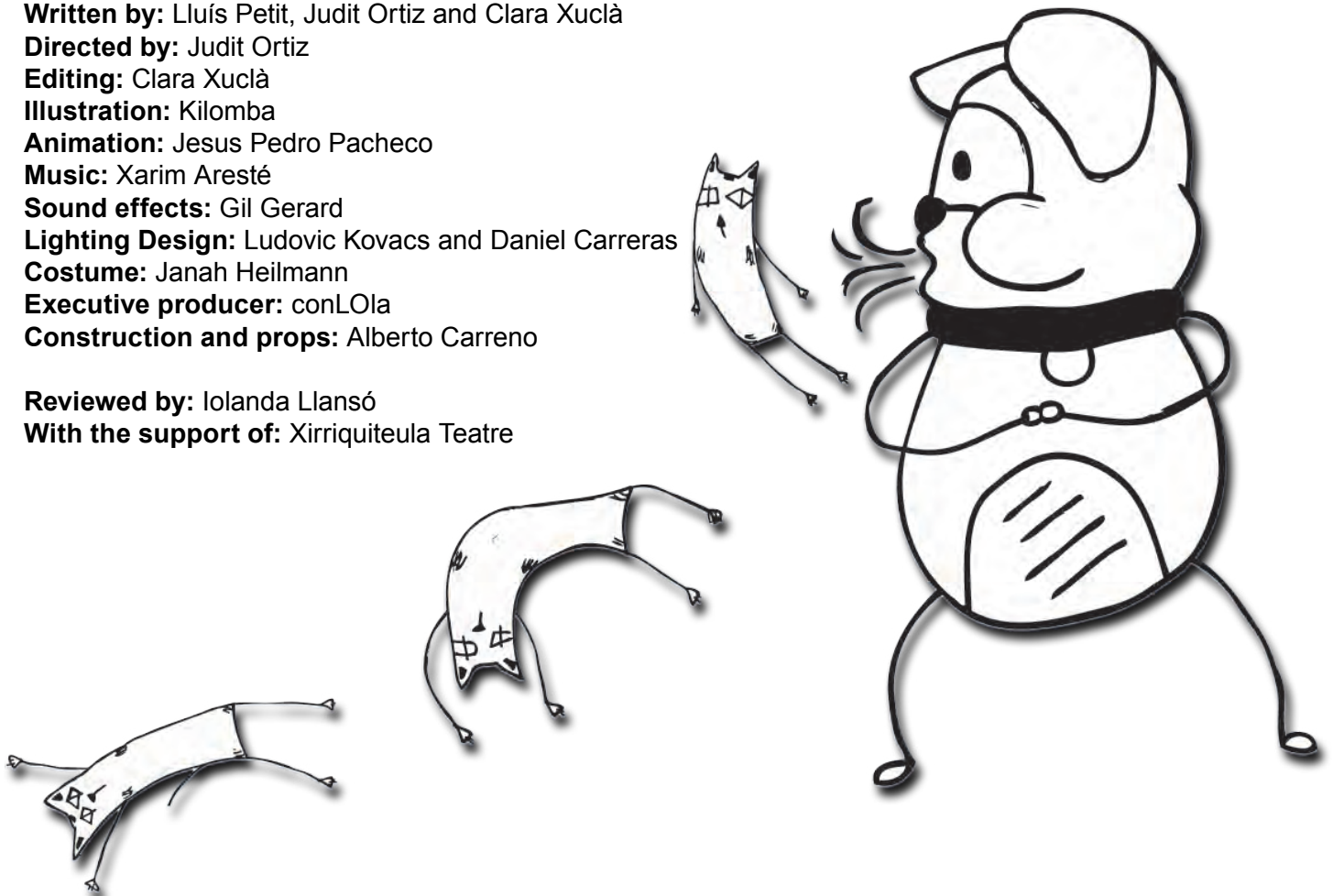
Costume: Janah Heilmann

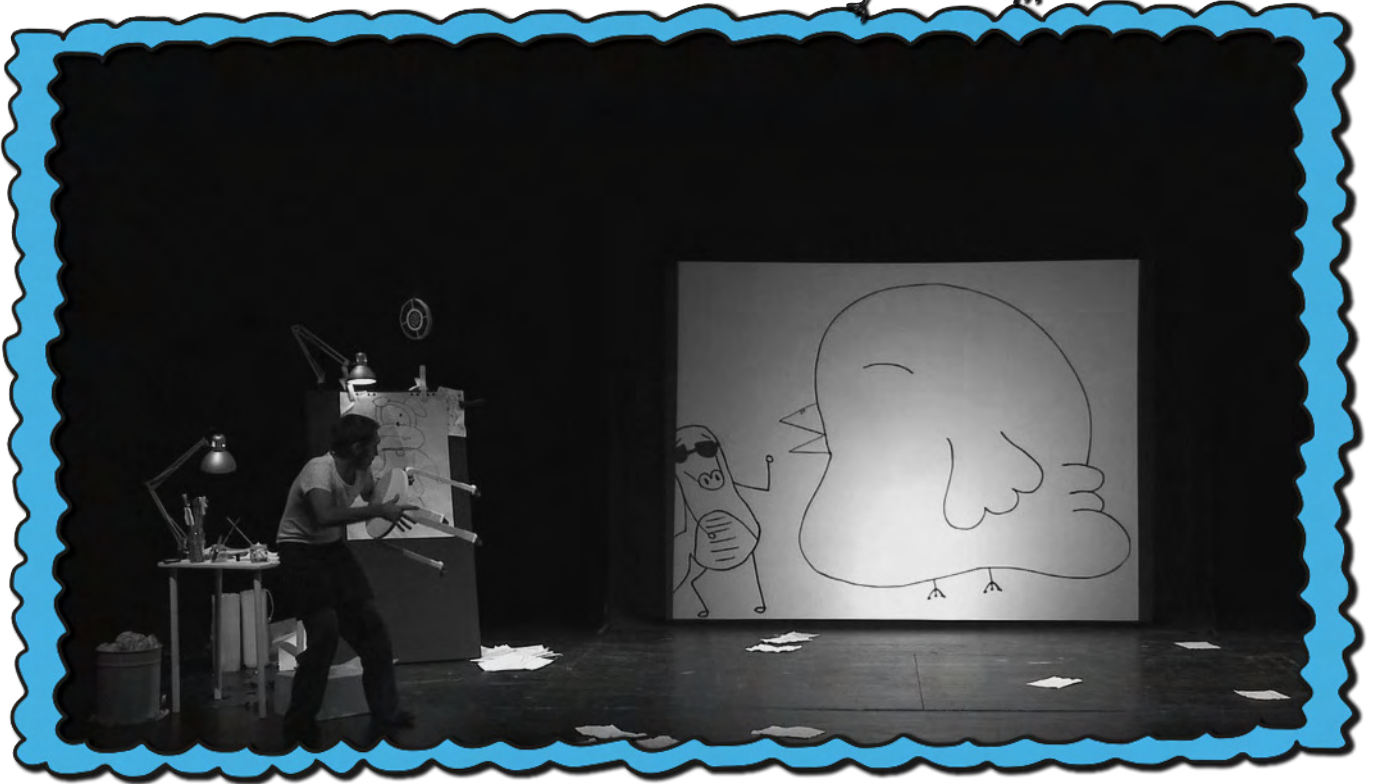
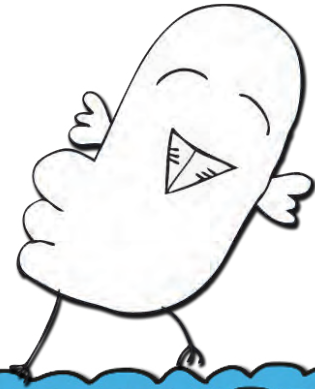
Executive producer: conLOla

Construction and props: Alberto Carreno

Reviewed by: Iolanda Llansó

With the support of: Xirriquiteula Teatre





Duration:

50 minutes

Recommended age:

All ages, 3 y/o and older

Performance space:

Open: 6m / Depth: 6m / Height: 4m

Room with full dark black box (for adjustments, see full technical rider)

Build up:

4 hours

Disassembly:

1.5 hours

Recommended capacity:

250-300 School groups

350 Family Audience

Artistic Techniques used:

Text Theatre/ Video animation / Clown

*Detailed technical rider sent upon request: info@obsidiana.cat



Promotional video

www.vimeo.com/teatreanimal

Contact and recruitment

Ana Sala Montoro

IKEBANAH Artes Escénicas:

+34 960 090 504 / +34 619 951 791

anasala@ikebanah.es

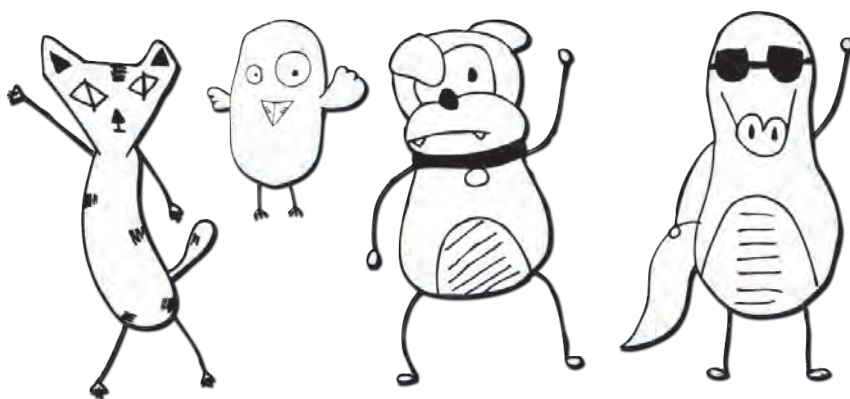
TeatreAnimal:

Lluís Petit

+34 617 632 347

info@teatreanimal.net

www.teatreanimal.net



Contributors

fet a
MATARÓ

CRONOPIS
ESPAI DE CIRC A MATARÓ

COMPANIA RESIDENT A
L'ESTRUCH Ajuntament de Sabadell

vesc

Cal Gras

Xirriquiteula teatre

Centre Cívic Can Felipa